

Inclusive Classroom Bundle

SMART®

Support ALL learners with SMART

Our Inclusive Classroom Bundle provides multimodal learning experiences to support all students, however they prefer to learn.

From customizable stamps to digital manipulatives to instructional audio and much more, SMART's Inclusive Classroom Bundle allows students to engage and participate in all learning experiences with relying on spoken or written language.



SMART Board® RX series

Tool Explorer customizable stamps

What's included?

RX series 75" interactive display

2 sets of Tool Explorer customizable stamps

3 year subscription to the Lumio Spark plan

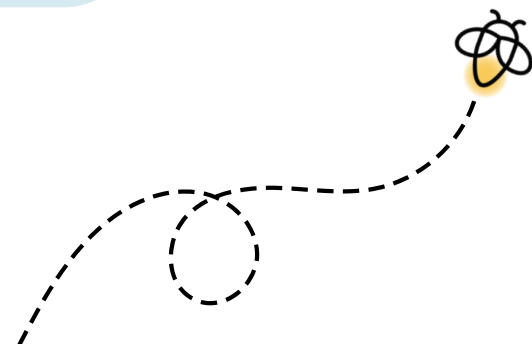
Height adjustable stand (optional upgrade)



SMART FSE-500 height adjustable mobile stand

Ask your SMART representative about how the free software included with every SMART Board interactive display helps create accessible learning environments.

Authorised reseller:



Supporting accessible environments for ALL learners

Inclusive approach

Inclusive design

Support inclusion with a range of multi-modal activities so every student can practice new learning in a way that's accessible to them. Keep students focused and allow them to move at a pace that fits their needs by toggling from teacher to student-led navigation.

Designed for inclusion from the ground up, SMART gives options for where and how learning can occur.

Inclusive access

Whether it's a visual, physical, or processing barrier, students can access learning where and how they need it, working together on a board or collaborating from their personal device.

Hands-on manipulatives and customizable Tool Explorer Stamps let all students communicate and participate – including those who are non-verbal, struggle to hold a pen, or prefer multi-modal communication, creating an inclusive experience for every student.

Inclusive voice

With SMART, there are multiple modes of expression in every product, so each student can communicate, organize thinking, and show what they learn. Discussion tools like Shout it Out and Whole Class Whiteboard allow students to communicate in text or images, giving all students a voice in class discussions.



Feature Spotlight



Tool Explorer

With Tool Explorer, teachers can customize stamps to fit each lesson, adapting to meet all students needs.



SMART Ink

allows all students to work together at the same time in diverse ways.



Intuitive touch

40 points of touch, tools and palm reject facilitate seamless collaboration while allowing students to lean on the panel for support.



Manipulatives

allow students to practice and bridge abstract to physical concepts without relying on spoken language.



Pacing and viewing

options help manage focus and allow students to zoom and adjust content to meet their needs.



Supports hardware.

Students can connect their accessibility devices to the SMART Board 6000S.

To learn more about accessibility at SMART visit [smarttech.com](https://www.smarttech.com)



©2023 SMART Technologies. All rights reserved. All third-party product and company names are for identification purposes only and may be trademarks of their respective owners.


Lumio™

Lumio supports inclusive learning with unique features like:

- Manipulatives
- Immersive reader
- Instructional audio
- Lesson pacing
- Flexibility
- Device support

